

COASTAL 250 EXTERIOR - METAL

Capacity:

- Maximum door weight: 250kg.
- Maximum door height: 3300mm.
- Door thickness: 35mm - 48mm.

Application:

Widely used in lighter commercial and industrial applications. To cover any width of opening, any number of doors can be used. For ultimate flexibility, doors can slide to one or both sides. Where doors are fitted externally, a canopy is recommended.

Components:

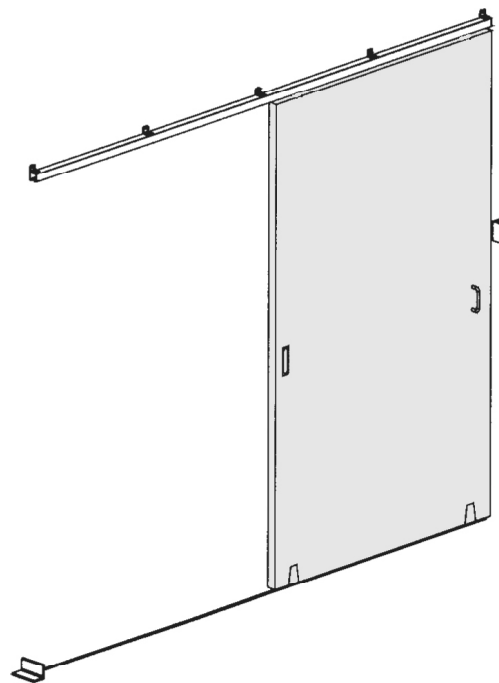
- Track - natural anodised aluminium (250). Available in 2m, 3m, 4m and 6m lengths.
- Brackets - face fix, stainless steel (1SS/250).
- Hanger - two per door, angle frame (56SS/HN).
- Hanger - two per door, box frame (56SS/HLN).
- Hanger - two per door, plate fixing (57SS/HN).
- Guide - stainless steel, plate fixing (106RB/94).
- Guide - angle frame (104P/97).
- Channel - aluminium (94X). Available in 1.6m, 2m, 2.5m, 3m and 3.2m lengths.
- Guide Channel - aluminium, anodised (94XNAA). Available in 2m, 3m, 4m and 6m lengths.
- Channel - brass (94). Available in 1.6m, 2m, 2.5m, 3m and 3.2m lengths.
- Channel - polypropylene (94P). Available in 2m, 3m, 4m and 6m lengths.
- Channel - polypropylene with aluminium support (94PA). Available in 2m, 3m, 4m and 6m lengths.
- Channel - galvanised steel (100). Available in 2m, 2.5m and 3m lengths.

Optional Extras:

- Flush Pull.
- Flush Bolt.
- Door Stops - (250DS).

Please note:

- Brackets should be fitted to 500mm - 800mm centres.
- Nylon wheeled hangers should not be used on installations involving temperatures exceeding 80°C.
- Please refer to component section for component options and technical detail.

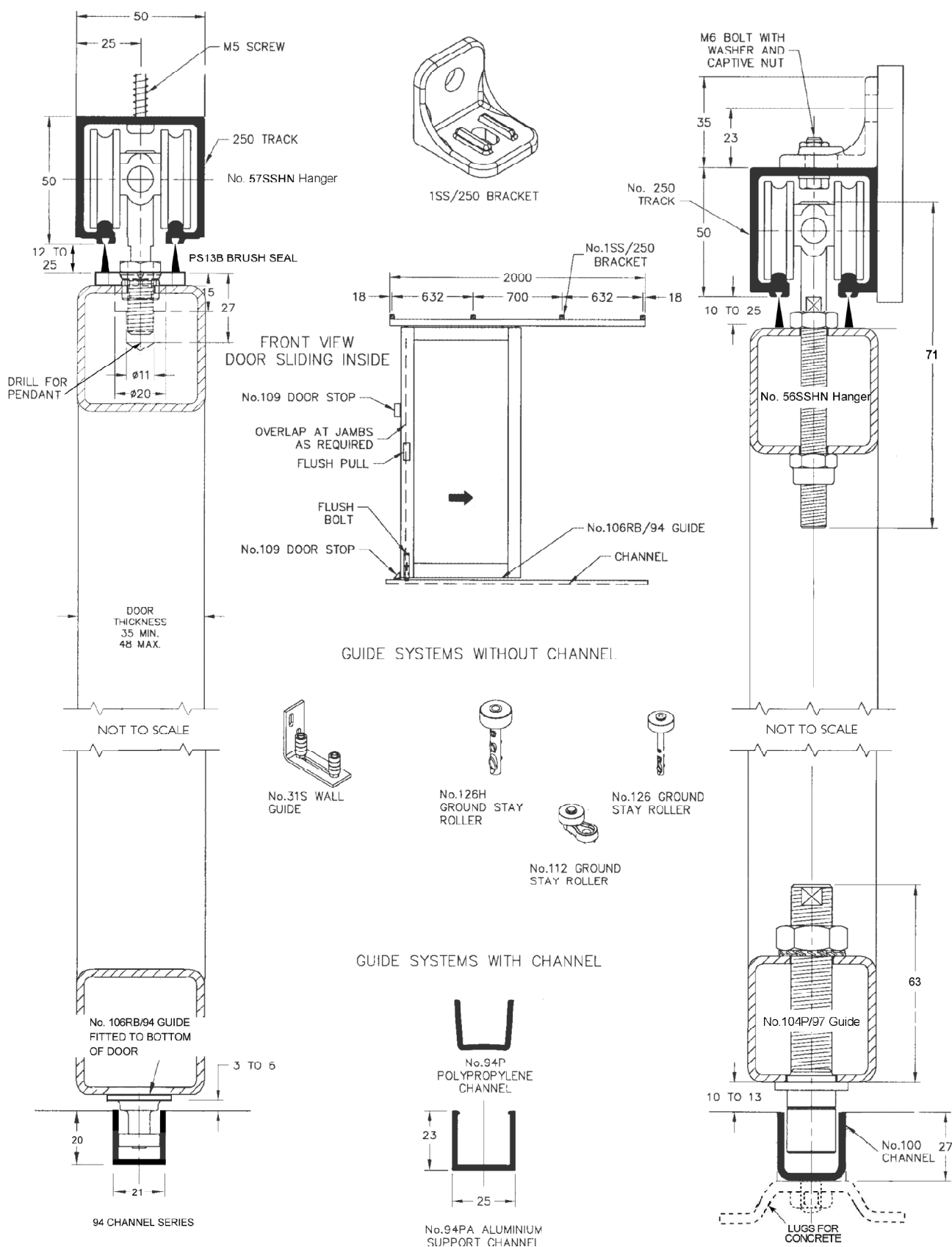


COASTAL 250 EXTERIOR - METAL

EXT



COASTAL 250 EXTERIOR - METAL



COASTAL 250 EXTERIOR - METAL